

12 | 14

STRADOM HOUSE

AUTOGRAPH COLLECTION<sup>®</sup>  
HOTELS

MODERNIST  
LIFESTYLE  
VENUE

Stradom House Autograph Collection  
12-14 Stradomska Street, Kraków, 31-058, Poland



*Stradom House, a lifestyle venue, situated between the Wawel Royal Castle and the Kazimierz Jewish district. It offers unparalleled experiences from **Sól Wellnes**, a **Stradomska 12** - modern polish restaurant and **Gaia** - a mediterranean eatery, as well as a world-class bar **Hedwigs** in a converted chapel.*

12114 Stradom House, Autograph Collection offers 125 rooms and suites, including the 155-square-metre Chapel Loft, which is the largest suite in the city. The Sol spa has been created in partnership with facialist Alexandra Soveral, and products are hand blended using natural raw ingredients. Inspired by local salt mining traditions. The spa also offers a 20-metre indoor pool, gym, steam room, hydromassage showers, bio sauna, infrared salt sauna and sound room. Guest can expect to see frescoes and high ceilings restored with the use of bold colours and textures. Artwork has been commissioned from local Polish artists including Wilhelm Sasnal, Tomasz Kowalski and Dorota Buczkowska.





12 | 14

STRADOM HOUSE

AUTOGRAPH COLLECTION®  
HOTELS



**CELEBRATION**

*The various concepts and interior design elements within the building encourage the guests to slow down and explore the comfortable and considered atmosphere*

**LIKE NO OTHER**

*Based on the multiple layers of art, craft, history, and architecture. Stradom House shapes inspired, timeless, mindful and memorable contemporary lifestyle experiences. New stories are about to be redefined*

**TIMELESS ATMOSPHERE**

*Stradom House style has no rules: it's a balance between aesthetic experimentation and the expression of its history.*

**NATURAL SOPHISTICATION**

*Inspiration to create playful, social and emotional experiences.*



The hotel is on the border of Old Town, close to the Wawel Castle, which leads to the heart of Krakow.

- Wawel Royal Castel - 1 min walking distance
- Market Square - 5 min walking distance
- Kazimierz Jewish Quarter - 3 min walking distance
- ICE Congress Center - 10 min walking distance
- Manggha - 9 min walking distance
- Tauron Arena - 15 min by car
- Krakow Airport Balice - 20 min by car
- Krakow Railway Station - 10 min by car
- National Museum in Cracow - 10 min by car
- Museum of Contemporary Art in Cracow - 14 min by car

- Architecture
- Culture
- Other hotels
- Parks & green areas
- Retail stores





**Accommodation:**

- 78 Modern and Heritage 22-27 sqm
- 26 Modern Grand and Heritage Grand 28-34 sqm
- 16 Modern and Heritage jr Suite 32-42 sqm
- 2 Heritage Suite 38-46 sqm
- 2 Chapel Suite 54 sqm
- 1 Chapel Loft 155 sqm (fully equipped kitchen, grand piano, vinyl and movie collection, playstation)

**Parking:**

- underground monitored parking with 43 parking spaces



Heritage



Heritage Grand



Modern



Modern



Modern Grand



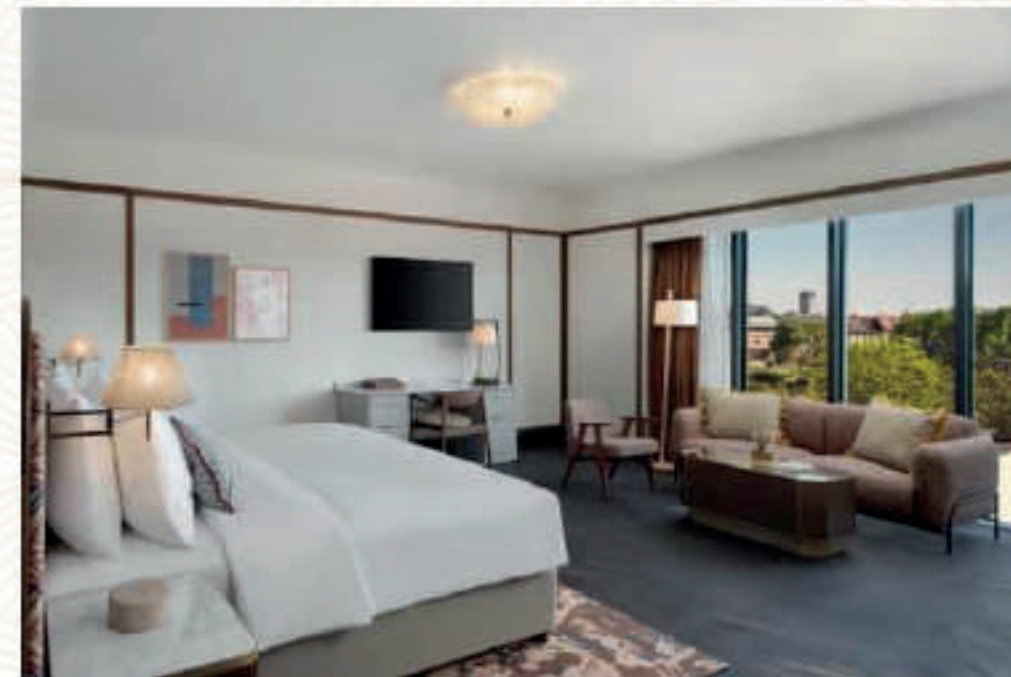


*Room features:*

- Air conditioning
- Openable windows
- Complimentary high-speed internet
- Flat-screen 55-inch LCD-LED TV
- In-room safe
- Iron facilities
- Working desk
- Hairdryer
- Upscale mini-bar
- Complimentary finest tea & coffee
- Bluetooth speakers & radio
- Ultra comfort mattress and pillow with luxury linen
- Eco responsible bathroom amenities
- Shower cosmetics by Alexandra Soveral
- In-room dining menu
- Free drinking water



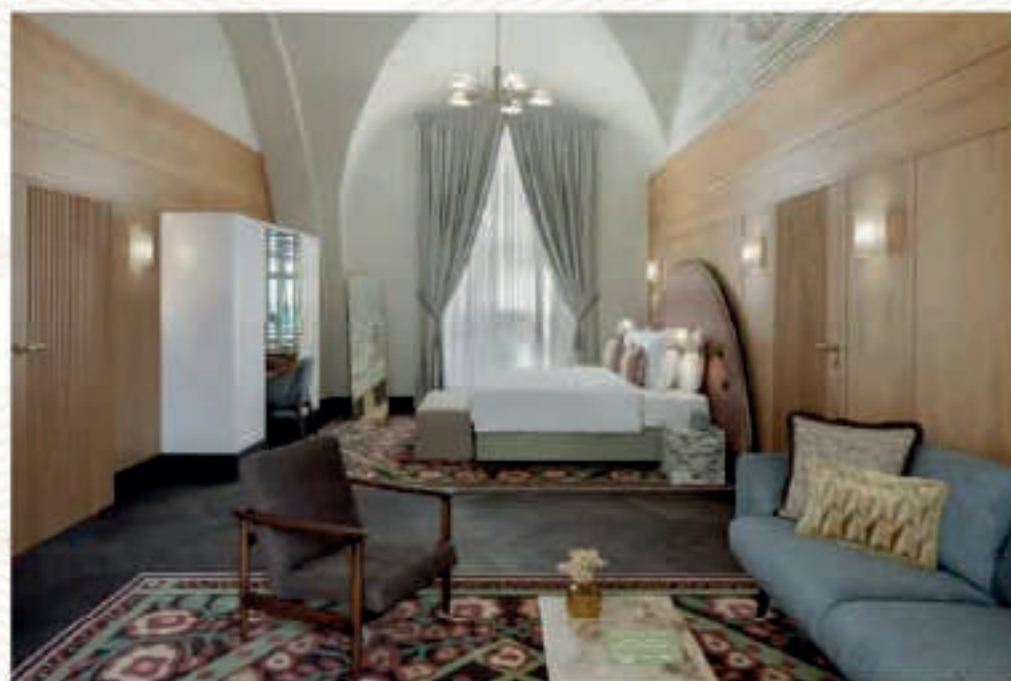
Heritage Junior Suite



Heritage Suite



Chapel Suite



Chapel Suite



Chapel Loft



## Lobby

Spacious 162-square-meter lobby with direct access to the Courtyard, with the possibility of informal meetings at a large table.





*The House atmosphere and interior design reflects a number of unique private & cosy event spaces available to members and non-members. It provides versatility creating a perfect setting for an intimate ceremony in the heart of the city.*

Each space provides discretion, boasts its own distinctive style and unique atmosphere, for entertaining, whatever a professional or family events, meeting, meals, cocktails, wedding, exhibition, parties and private screening. Select from our seasonal all day menus or a Chef's bespoke culinary experience. Our team of talents is available from private bar, DJ booth, Live station, Chef's table, wine tasting, pre and post relaxing group activities with our Sol Expert. All meeting rooms are air-conditioned and equipped with projector, screens, sound system, WiFi internet access.



| Name            | Daylight | Level | Shared room | Length | Width | Height  | Room size | Theatre  | Classroom | Banquet | Boardroom | U-Shape |
|-----------------|----------|-------|-------------|--------|-------|---------|-----------|--|-----------|---------|-----------|---------|
| The Salon       | Yes      | 0     | Yes         | 17.6   | 8.6   | 3.6     | 150 sqm   | 120  | 72        | 96      | 40        | 50      |
| The Playroom    | No       | -1    | Yes         | 10.6   | 9     | No      | 96 sqm    | 60   | 30        | 48      | 24        | 30      |
| The Key Room    | No       | -1    | No          | 7.4    | 6.3   | 2.7     | 47 sqm    | 20   | 12        | 12      | 10        | 15      |
| The Arch        | No       | -1    | No          | 5.8    | 4.7   | max 3.7 | 27 sqm    | Long table 8 people for meeting, video conference, private dining, direct access to the Key room.      |           |         |           |         |
| The Chapel Loft | Yes      | +4    | No          | 19.25  | 8.1   | 3.5     | 155 sqm   | 10-15 people allocated on the 4th floor, kitchen, dining table 8-10 seats.                             |           |         |           |         |
| Story Room      | Yes      | 0     | No          | 5.9    | 4.1   | 3.5     | 24 sqm    | Long table for a 6 people meeting, video conference, direct access to the patio.                       |           |         |           |         |
| The Cellar      | Yes      | 0     | No          | 5.8    | 7.4   | 3.5     | 43 sqm    | 24 people for meeting, video conference - long table 10 people for dinner, direct access to the patio. |           |         |           |         |

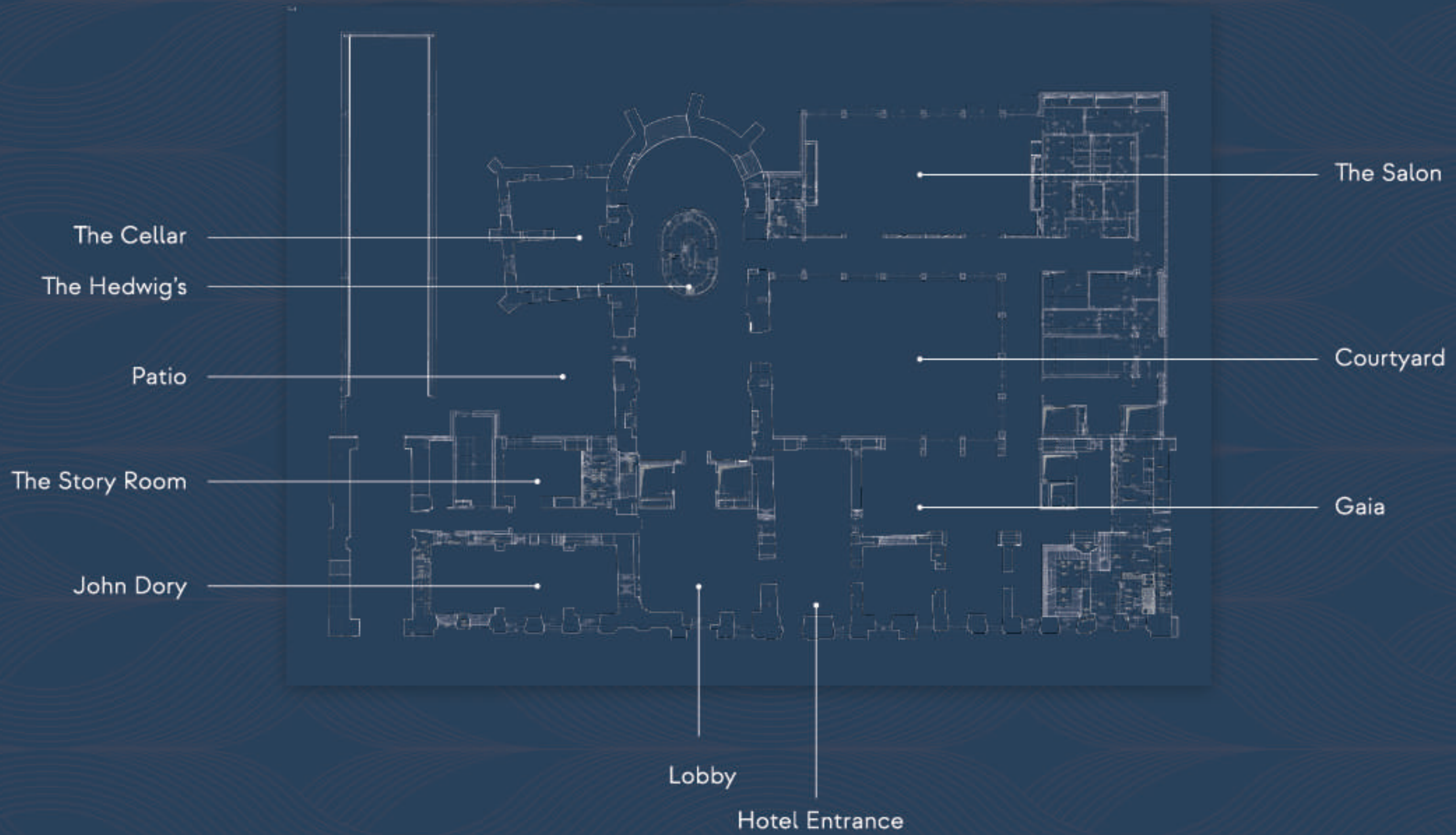




| Name          | Daylight | Level | Shared room | Lenght | Width | Height   | Room size |   |
|---------------|----------|-------|-------------|--------|-------|----------|-----------|---|
| The Hedwig's  | Yes      | 0     | No          | 9.1    | 24.8  | max 9.0  | 226 sqm   | Capacity of 80 seats  |
| Gaia          | Yes      | 0     | No          | 15.5   | 13.2  | 4.8      | 205 sqm   | Capacity of 60 seats and additional 60 seats in the courtyard |
| Stradomska 12 | Yes      | 0     | No          | 6.3    | 8.1   | 4.8      | 51 sqm    | Capacity of 26 exclusive seats                                |
| Courtyard     | Yes      | 0     | No          | 13.83  | 15    | no limit | 208 sqm   | 60 people seated at the tables garden style                   |
| Secret Garden | Yes      | 0     | No          | 9      | 7.5   | no limit | 68 sqm    | 28 people seated at the tables garden style                   |

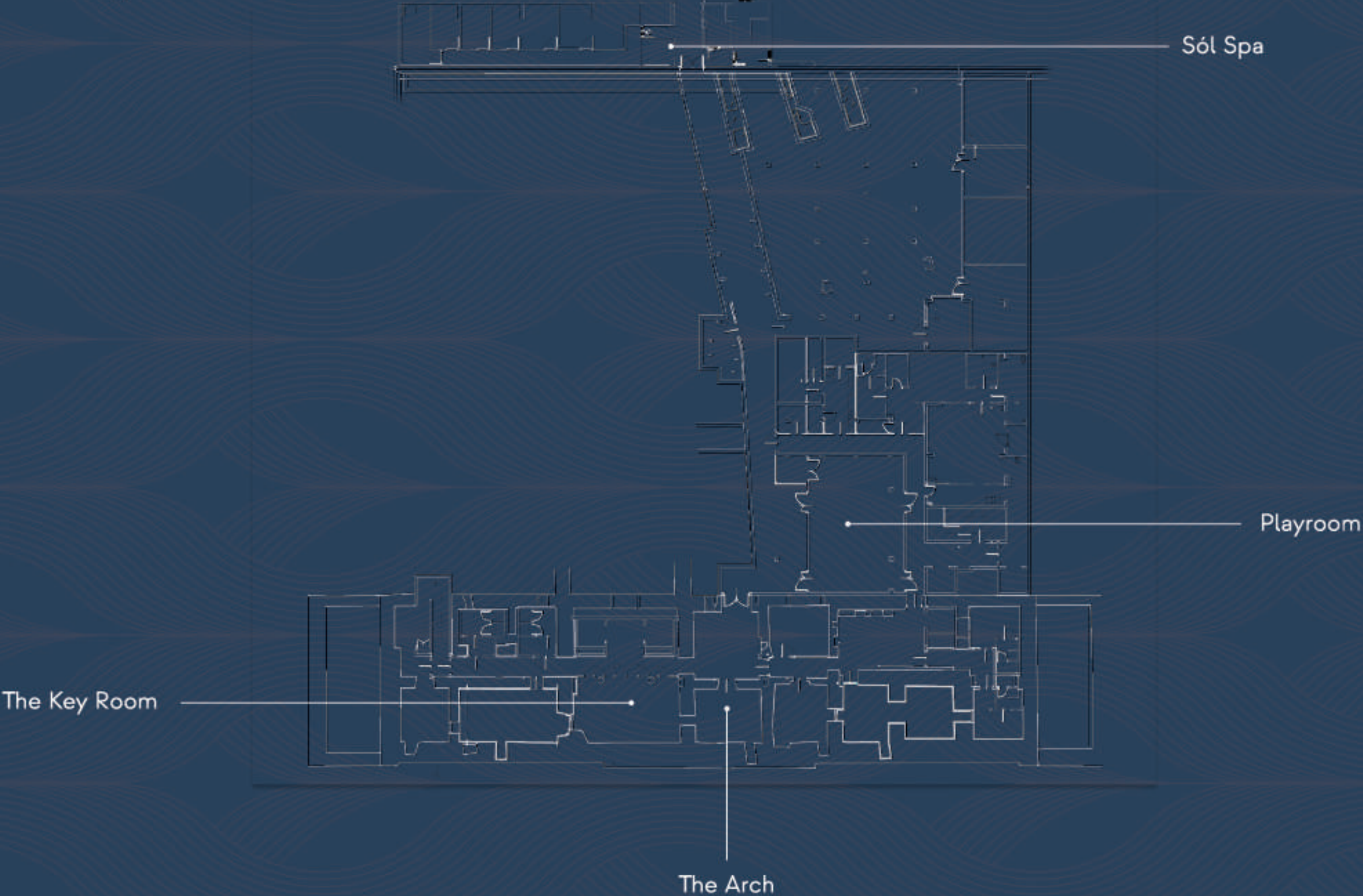


# Ground floor floorplan





# Basement floorplan





# The Salon

| Daylight | Level | Shared room | Lenght | Width | Height | Room size | Theatre | Classroom | Banquet | Boardroom | U-Shape |
|----------|-------|-------------|--------|-------|--------|-----------|---------|-----------|---------|-----------|---------|
| Yes      | 0     | Yes         | 17.6   | 8.6   | 3.6    | 150 sqm   | 110     | 72        | 72      | 40        | 50      |





# The Playroom

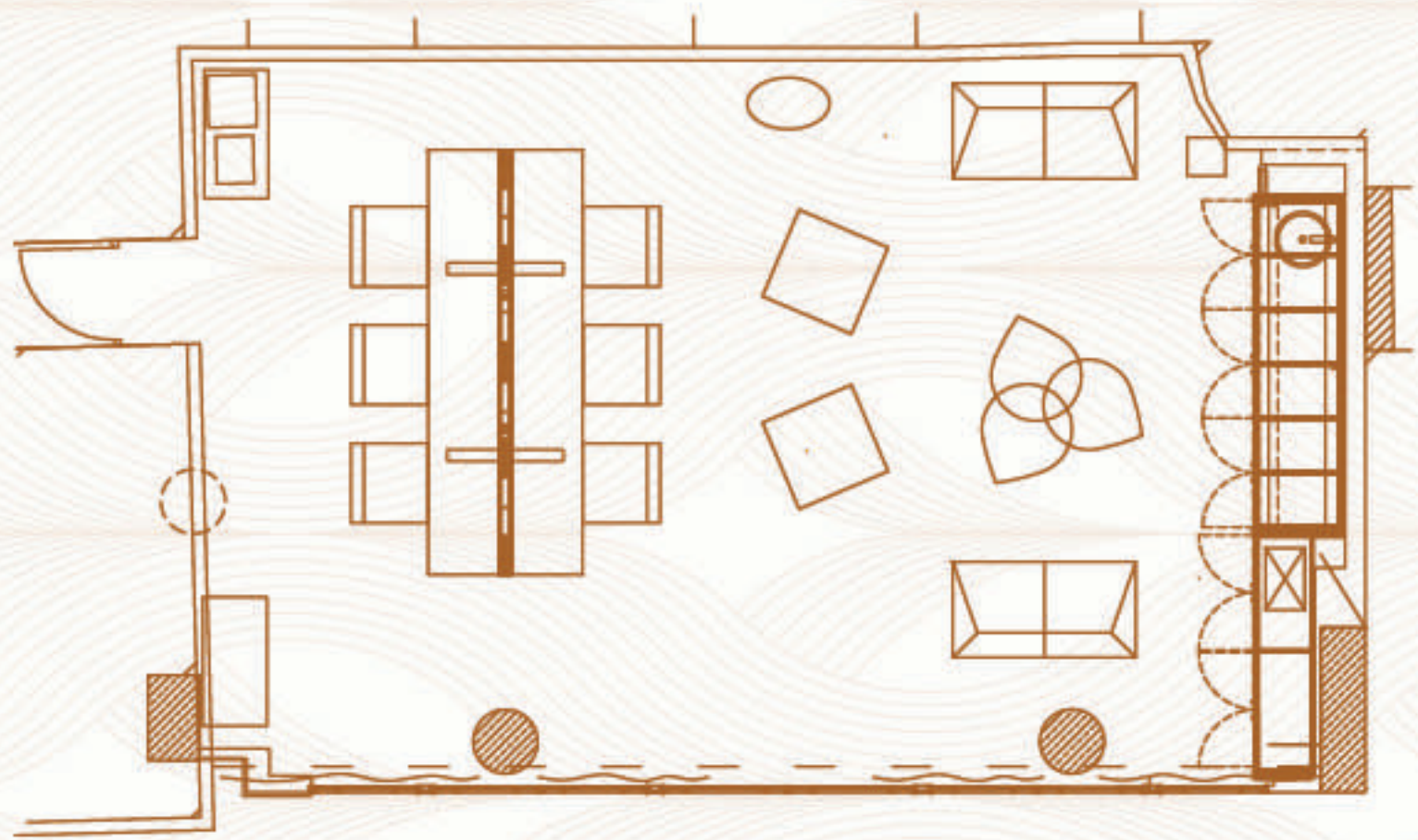
| Daylight | Level | Shared room | Lenght | Width | Height | Room size | Theatre | Classroom | Banquet | Boardroom | U-Shape |
|----------|-------|-------------|--------|-------|--------|-----------|---------|-----------|---------|-----------|---------|
| No       | -1    | Yes         | 10.6   | 9     | No     | 96 sqm    | 60      | 30        | 36      | 24        | 30      |





# The Key Room

| Daylight | Level | Shared room | Lenght | Width | Height | Room size |  |
|----------|-------|-------------|--------|-------|--------|-----------|--|
| No       | -1    | No          | 7.4    | 6.3   | 2.7    | 46.96 sqm | 20 people - 8 people dinner, living room atmosphere, video projector and screen, direct acces to the Arch. |

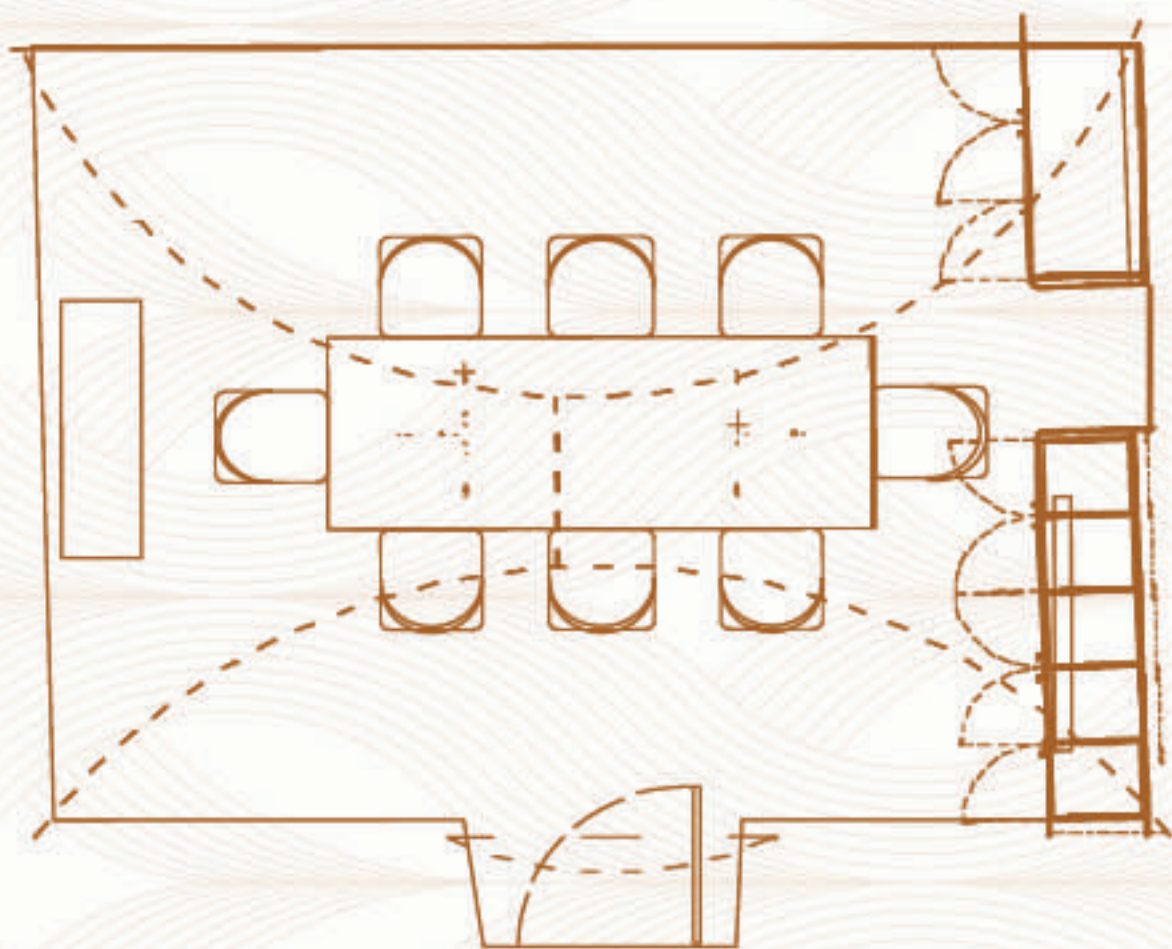




# The Arch

|          |       |             |        |       |         |           |
|----------|-------|-------------|--------|-------|---------|-----------|
| Daylight | Level | Shared room | Lenght | Width | Height  | Room size |
| No       | -1    | No          | 5.8    | 4.7   | max 3.7 | 27.26 sqm |

Long table 8 people for meeting, video conference, private dining, direct access to the Key room.





# Chapel Loft

| Daylight | Level | Shared room | Lenght | Width | Height | Room size |   |
|----------|-------|-------------|--------|-------|--------|-----------|---|
| Yes      | +4    | No          | 19.25  | 8.1   | 3.5    | 155 sqm   | 10-15 people allocated on the 4th floor, kitchen, dining table 8-10 seats |





# Story Room

| Daylight | Level | Shared room | Lenght | Width | Height | Room size |  |
|----------|-------|-------------|--------|-------|--------|-----------|--|
| Yes      | 0     | No          | 5.9    | 4.1   | 3.5    | 24 sqm    | Long table 8 people for meeting, video conference, direct access to the patio. |





# The Cellar

Daylight

Yes

Level

0

Shared room

No

Length

5.8

Width

7.4

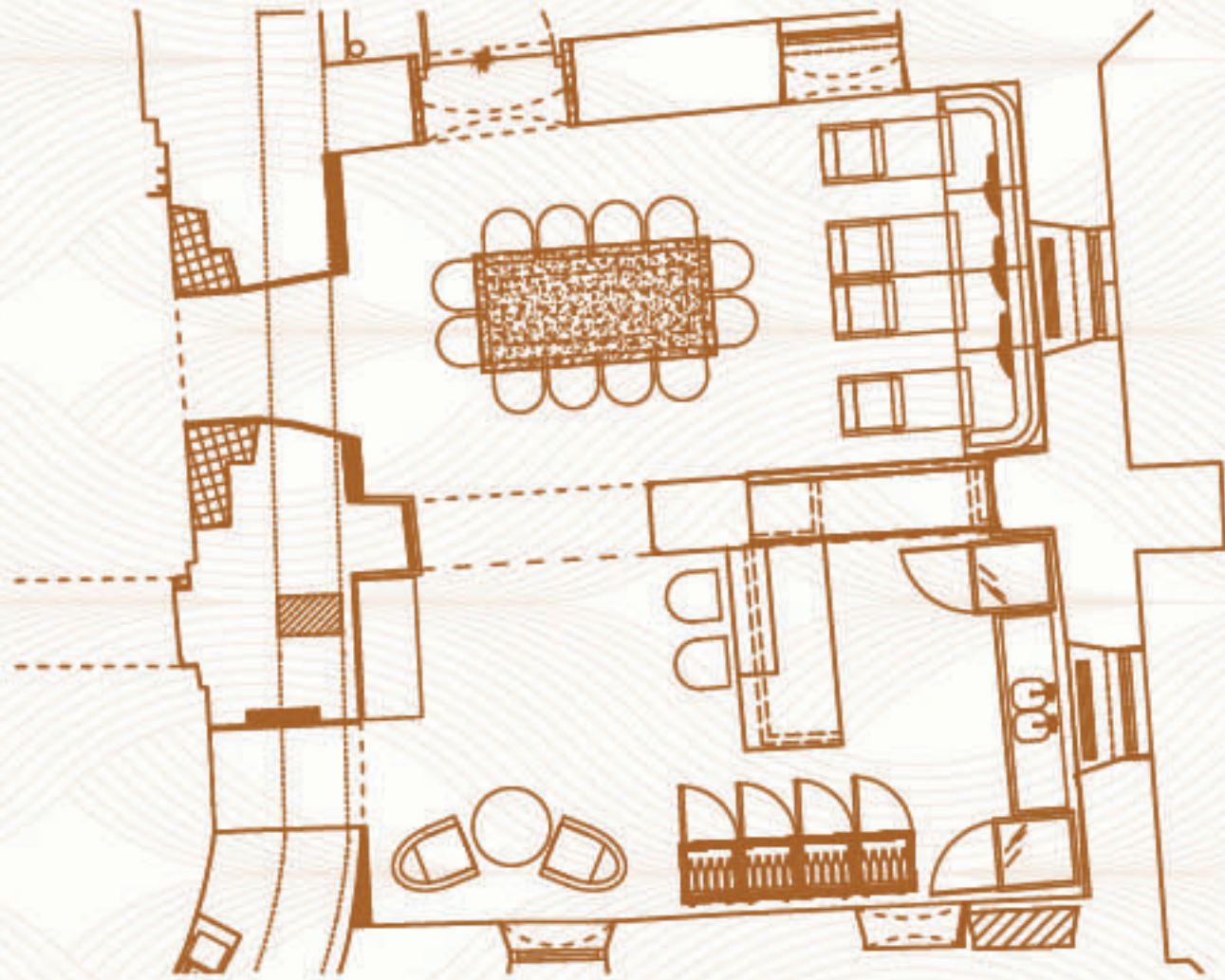
Height

3.5

Room size

43 sqm

24 people for meeting, video conference - long table for 10 people for dinner, direct access to the patio.





# Courtyard

Yes

+0

No

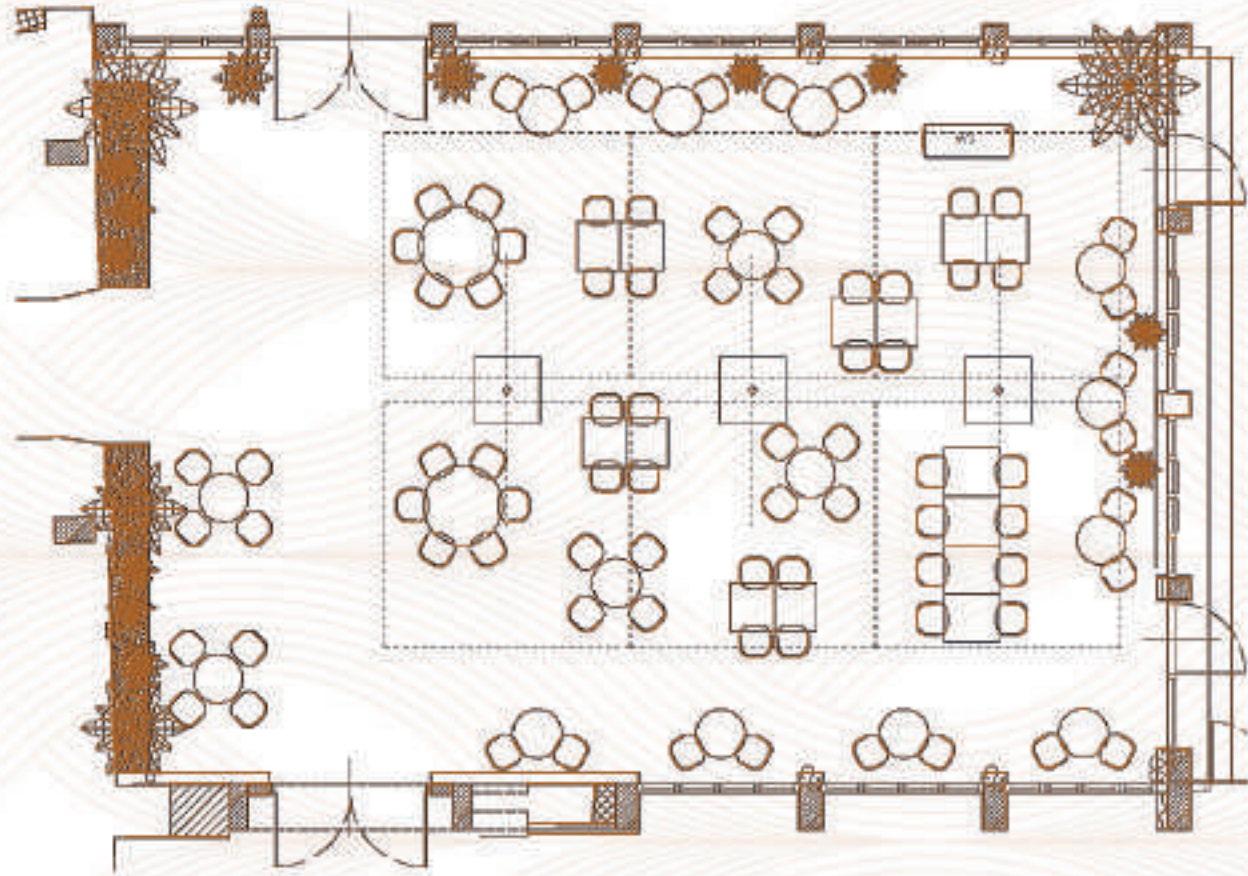
13.83

15

no limit

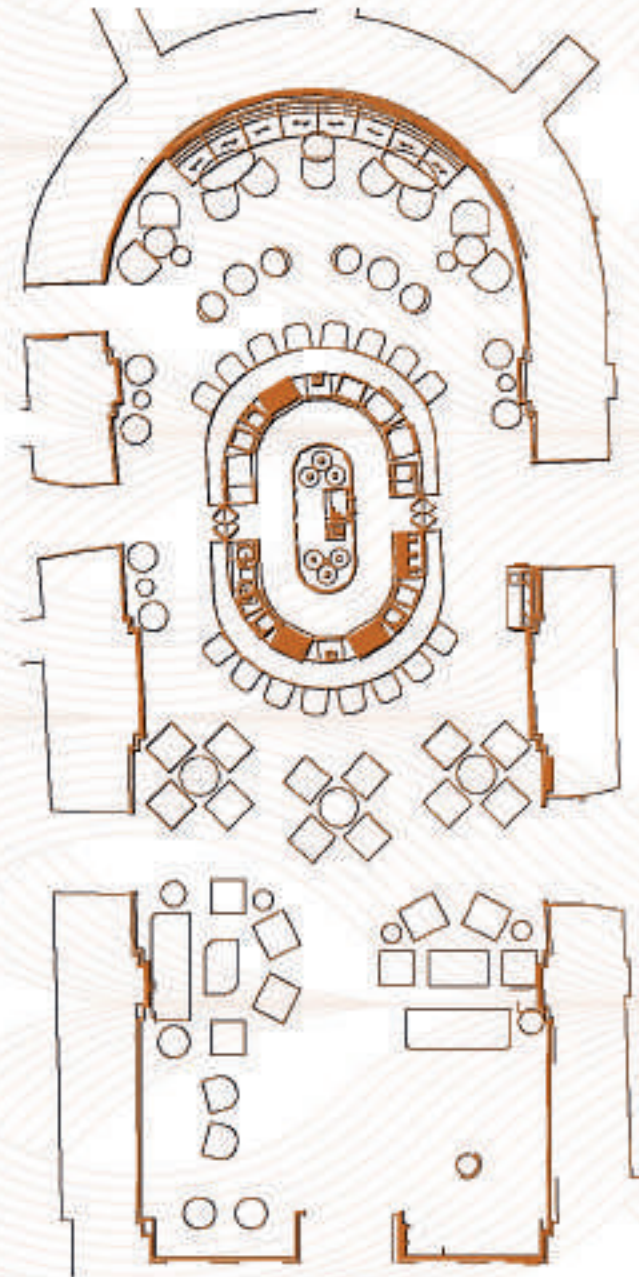
208 sqm

60 people seated at the tables garden style.





**Hedwig's**, was built in XIV, melding heritage and old-world elegance with visionary new-world design. It results in an unrivalled atmosphere in an exceptional venue. The club interiors is outrageously insta-worthy, with an all-day & night dining, cocktail bar and wine cellar. At night, it metamorphoses to an exclusive nightlife scene for an eclectic and cosmopolitan clientele. Option to privatize.





**Gaia** eatery is a celebration of Krakow's contemporary Mediterranean-style revival. We cordially invite you to partake in a relaxed and casual atmosphere, reminiscent of cherished excursions to southern Europe. Our establishment aims to introduce the concept of a Mediterranean feast to Krakow. Option to privatize.





The **Stradomska 12** restaurant offers 26 seats in contemporary decor with unique art by Itamar Gilboa and Dorota Buczkowska, part of Stradom House Art Collection. Our menu focuses on modern Polish cuisine, mixing traditional recipes with a refreshed look by chef Robert Panek. The Stradomska 12 offers a local Polish selection of wines - white, red, sparkling, as well as some strong liqueurs.



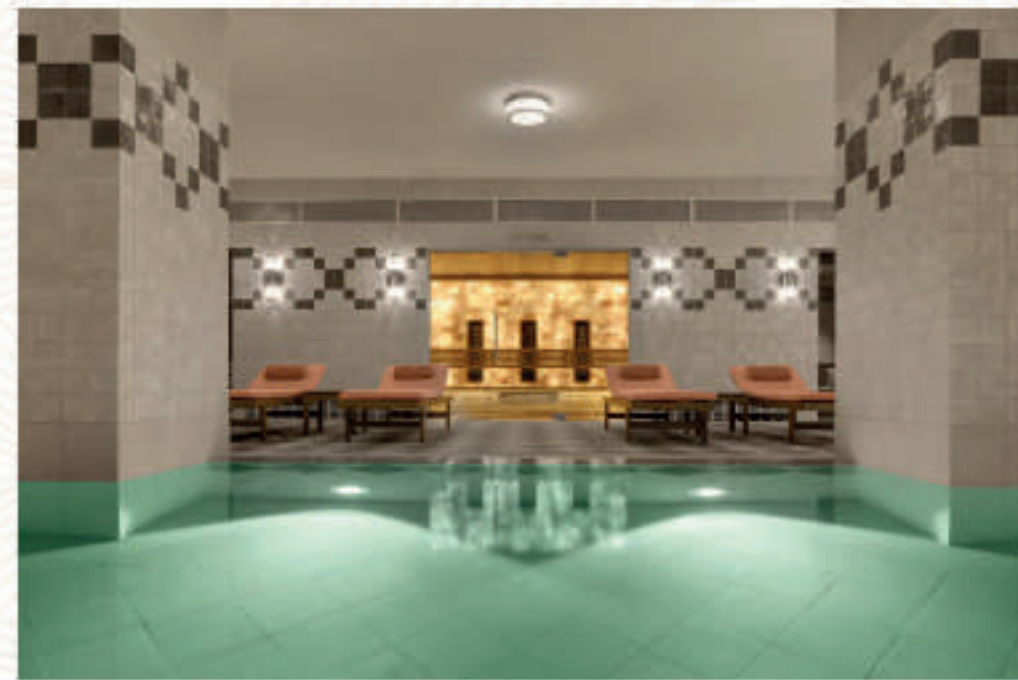


## SÓL Aqua and Fit

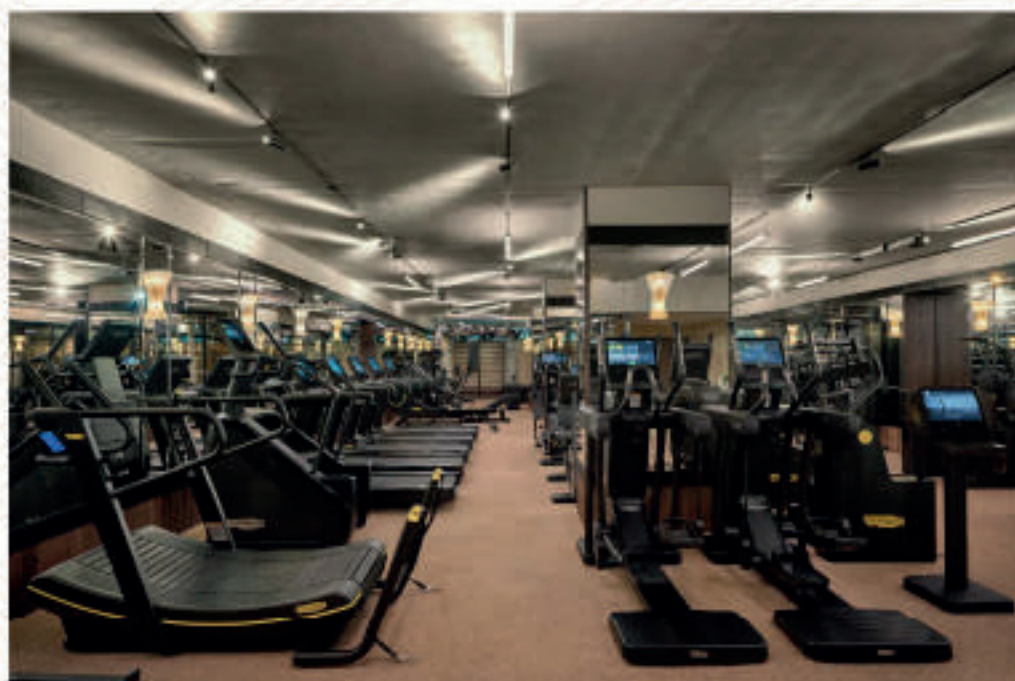
- 20-metre swimming pool
- 250 m2 gym with state-of-art TechnoGym Artis equipment
- Cryotherapy pool
- Bio-sauna
- Infrared salt sauna
- Sound therapy room
- Bar with relaxation area
- Hydro-massage showers



Pool



Pool



Gym



Infrared Sauna



Bio Sauna





The **Wellness SÓL** is a cornerstone of Stradom House. Experience an innovative relaxation and care philosophy at our wellness center, which has been collaboratively developed with esteemed London specialist **Alexandra Soveral**. The exceptional amenities and services offered by the **SÓL Spa**, state-of-the-art **SÓL Fit** gym, **SÓL Aqua** zone, and exclusive bar create an enlivening energy and atmosphere of deep serenity.

**Alexandra Soveral** from London has curated an assortment of refined beauty treatments and essential oils for massages. The proprietary natural cosmetics of **Soveral London** are also available in our space, all thoughtfully designed to achieve a harmonious balance of body and mind.





# Hotel Events





# Hotel Events





# Hotel Events





## CONTACT

+48 12 201 58 06

[sales@stradomhouse.com](mailto:sales@stradomhouse.com)

12 - 14 Stradomska street, Kraków 31-058, Poland

[stradomhouse.com](http://stradomhouse.com)

